



Sponsored by the Maryland State Department of Education

2011 Maryland Summer Centers for Gifted and Talented Students Summary Sheet

Spanish translation is available. Call 410-767-0821.

Continuing a tradition of excellence for forty-four years, the Maryland Summer Centers (MSC) engage gifted and talented students entering Grades 4-12 in unique summer programs. Centers located across the State offer one- to three-week residential and nonresidential programs with a focus on the arts, sciences, technology, engineering, and world languages.

Please consult the Maryland State Department of Education website www.marylandpublicschools.org/summercenters for more detailed descriptions of the Centers and application forms.

The deadline for applications is April 30. Directors will accept applications after April 30 until the Center enrollment is filled.

Honeywell Maryland Summer Center for Ecosystems Education at Horn Point

LOCATION: University of Maryland,
Horn Point Environmental Lab,
Cambridge
Dorchester County
ENTERING GRADES: 6-10
DATES: See below.
TUITION: \$375 one-week residential

Work beside scientists at one of the premier research facilities in the world, the Horn Point Environmental Laboratory on the Choptank River. Using the Investigating and Evaluating Environmental Issues and Actions model, students will collect and analyze real-world data to determine the effects of physical, chemical, biological, and human influences on submerged aquatic vegetation, the rockfish, the blue crab, and the oyster in the Chesapeake Bay.

Section A: Entering Grades 6-7
July 16-22
Section B: Entering Grades 8-10
July 24-30

Contact: Sue Grudis
27103 Patriot Drive
Salisbury, MD 21801
(443) 783-1631 after 3
sogrudis@comcast.net

SAIC¹ and NMTC² Maryland Summer Center for Space Science

LOCATION: Johns Hopkins University
Applied Physics Laboratory, Howard
County
ENTERING GRADES: 6-7
DATES: July 18 – 29
8:30 AM – 3:00 PM
TUITION: \$350 two-week nonresidential

Learn about the current applications of space technology and exploration of the solar system by simulating the process involved in designing a NASA Discovery Mission. Plan and launch a simulated space mission, including the design and fabrication of instrumentation for a spacecraft. Build and program robots to accomplish tasks in a space-like environment. Interact with scientists and engineers, tour Mission Control, and the environmental test facilities located at the Johns Hopkins University Applied Physics Laboratory.

Contact: Johnna Alexander
Baltimore County Public Schools
7400 Dunmanway
Baltimore, MD, 21222
(410) 887-7018
jalexander4@bcps.org

¹Science Applications International Corporation
²Northeastern Maryland Technology Council

Harford County Public Schools Maryland Summer Center for Conservation Research

LOCATION: Harford Glen Environmental
Center
Harford County
ENTERING GRADES: 4-8
DATES: July 18-29
8:00 AM – 3:00 PM
TUITION: \$250 two-week nonresidential

Harford Glen is the home to large areas of wetlands containing numerous rare plants and many forms of wildlife that use the wooded areas and water as a refuge. Due to the ever-increasing number of people looking for outdoor experiences, these ecological resources are being impacted. At the Center for Conservation Research, you will research topics such as aquatic biology, wildlife management, forestry, and soil conservation. You will use Geospatial technologies such as GIS and GPS to collect and analyze data. The output of this research will be an action plan and presentation.

Contact: Eric Cromwell
Harford County Public Schools
102 South Hickory Avenue
Bel Air, MD 21014
(410) 588-5354
eric.cromwell@hcps.org
www.hcps.org/gifted



Maryland Summer Center for the Performing and Visual Arts at the Eubie Blake National Jazz Institute

LOCATION: Eubie Blake National Jazz Institute and Cultural Center
Baltimore City
ENTERING GRADES: 4-12
DATES: June 27 - July 18
8:30 AM – 3:00 PM
TUITION: \$450 three-week nonresidential
AUDITIONS: May 7

Students in Grades 4 - 8 will work with professional teaching artists to rehearse and present a musical theatre production based on the historic period of the Harlem Renaissance. Theatre, dance, and vocal music students will perform on stage. Although art students will perform on stage, you will also create visual masterpieces and design and produce scenery, props, costumes, and make-up and create posters and a program for the production. Your artistic masterpieces will be displayed in an art exhibit at the Center. Students in Grades 9-12 will participate in a Jazz Instrumental Workshop and learn music theory, improvisation, repertoire and performance.

Contact: Troy Burton
Eubie Blake National Jazz Institute and Cultural Center
847 North Howard Street
Baltimore, MD 21201
(410) 225-3130
eubieblake@rcn.com
www.eubieblake.org

SAIC¹ Maryland Summer Center for Computer Programming: ALICE in Programming Land

LOCATION: Meade Middle School, Anne Arundel County
ENTERING GRADES: 7-9
DATES: July 11-22
8:30 AM – 3:00 PM
TUITION: \$300 two-week non-residential

Have you ever wanted to design your own animated computer game? Is computer programming something that you think about doing in your future? Are you interested in the world of gaming, graphic arts, information assurance, or cyber security? During your time with ALICE in Programming Land, you will have an opportunity to work in teams as well as independently to produce a computer animated story. You will engage with teachers and specialists in the programming field. You will employ logic and sequencing to develop your programming skills. As you practice manipulating your story objects, you will learn how to create programming codes. You will develop story boards and finally your own animated story will evolve that will be shared with STEM professionals from Science Applications International Corporation (SAIC) in Columbia. You will also learn about the careers open to those with computer programming skills in the areas of higher education, high tech industries, the sciences, military, and national security.

Contact: Maureen McMahon or Betty Elder
Advanced Studies and Programs Office
Anne Arundel County Public Schools
2644 Riva Road
Annapolis, MD 21401
(410) 222-5365 or (410)222-5430
mmcmahon@aacps.org
eelder@aacps.org

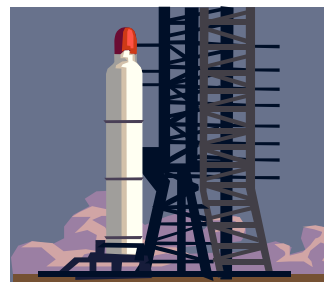
¹Science Applications International Corporation

How to Apply

Obtain application information from the website www.marylandpublicschools.org/summercenters, the Center Contact, or Stephanie Zenker
Maryland State Department of Education
200 W. Baltimore Street 5th floor
Baltimore, MD 21201
410-767-0821
szenger@msde.state.md.us

All programs use a selection process based on multiple criteria. Programs in the arts require a portfolio and/or audition. Please note earlier dates for auditions in the arts programs.

All Maryland Summer Centers programs offer financial assistance.



Maryland Summer Center for Future Engineers: Robot Design sponsored by Northrop Grumman and the Maryland Space Business Roundtable

LOCATION: Frostburg State University
Allegany County
ENTERING GRADES: 9-12
DATES: June 25 - 30
TUITION: \$475 6-day residential

Look into the future as you design and program your very own robot to traverse a simulated moon surface. You will assess the terrain and then use your newly acquired engineering knowledge, creativity, and passion to program your robot to accomplish certain goals. While working with engineers in high tech, state-of-the-art labs and you will also explore career paths in the exciting field of engineering. In addition, you will have the opportunity to experience living on a college campus.

Contact: Dr. M. Eltayeb
Center for Future Engineers: Robotic Design
Frostburg State University
Department of Physics and Engineering
123 Compton Science Center
Frostburg, MD 21532
(301) 687-4298
Fax (301) 687-7966
mseltayeb@frostburg.edu
www.msc-robotics.net

The Maryland State Department of Education does not discriminate on the basis of race, color, sex, age, national origin, religion, disability, or sexual orientation in matters affecting employment or in providing access to programs. For inquiries related to Department policy, contact
Equity Assurance and Compliance Branch.
410-767-0433 – voice
410-767-0431 – fax
410-333-6442 – TTY/TDD



SAIC¹ Maryland Summer Center for Computer Science

LOCATION: Aberdeen High School, Harford County
 ENTERING GRADES: 4-10
 DATES:
 Session 1 (Grades 4-7) July 11-22
 Session 2 (Grades 8-10) July 25-Aug 5
 8:00 AM – 3:00 PM
 TUITION: \$100 two-week nonresidential

Learn a new way to be creative by programming with ALICE [www.alice.org], a 3D environment designed for beginning computer programmers. Participants will become the architects of their own virtual worlds, animating visual objects using straightforward commands that make programming easier to understand. Alice Worlds can take the form of storyboards, presentations, and video games. Students will exercise their creativity, problem-solving, and critical thinking skills while designing a final project to present at the conclusion of the session. The skills developed through ALICE provide a useful foundation for learning more advanced programming in computer languages such as Java or C++, or they can be put into practical use to prepare unique, interactive school projects.

Contact: Eric Cromwell
 Harford County Public Schools
 102 South Hickory Avenue
 Bel Air, MD 21014
 (410) 588-5354
eric.cromwell@hcps.org
www.hcps.org/gifted

¹Science Applications International Corporation

SAIC¹ and NG² Maryland Summer Center for the Physics of Solar and Wind Power

LOCATION: Frostburg State University, Allegany County
 ENTERING GRADES: 7-9
 DATES: July 10 – July 16
 TUITION: \$375 one-week residential or \$280 one-week nonresidential

Do you love science and mathematics? Work with college professors to learn the principles of electricity, power, and energy to set up a model house with a windmill and solar panels to study how these basic principles apply to the residential use of renewable energy. After careful data collection on efficiency and cost analysis, you will prepare arguments in favor of or opposing the use of solar and wind power as a source of energy for typical houses.

Contact: Dr. Hang Deng-Luzader
 Department of Physics/Engineering
 Frostburg State University
 104 Compton Science Center
 Frostburg, MD 21432
 (301) 687-4385
hluzader@frostburg.edu

¹Science Applications International Corporation
²Northrop Grumman

Maryland Summer Center for the Fine and Performing Arts

LOCATION: Salisbury University, Wicomico County
 ENTERING GRADES: 7-12
 DATES: July 3 - 16
 TUITION: \$950 two-week residential \$25 materials fee

Financial assistance is available.

Come to the beautiful campus of Salisbury University and gain a sense of living in an artists' community. Enhance your unique abilities and learning style as you participate in one of the following course offerings: orchestra, musical theater, acting, integrated visual arts, or digital video production.

Contact: Robert Smith
 Salisbury University
 1101 Camden Avenue
 Salisbury, MD 21801-6860
 (410) 548-4777
msca@salisbury.edu

Applications must be postmarked by April 8 in order to attend an audition.

April 16: Salisbury University, or
 April 9: Franklin Middle School, Baltimore County

Maryland Summer Center for Historical Research At Pemberton Hall

LOCATION: Pemberton Hall
 Pemberton Dr.
 Salisbury, MD

ENTERING GRADES: 5-7
 DATES: July 11 – July 15
 9:00 AM – 4:00 PM
 TUITION: \$150 one-week nonresidential

Explore the past as you conduct research into the lives of those who once lived and worked at Pemberton Hall, an 18th century plantation along the shores of the Wicomico River. Learn about the crafts, clothing, cooking, and chores of the inhabitants using primary and secondary sources. Work with professors of history and professional researchers as you conduct research of your own using original documents and microfilm records at the Salisbury University Nabb Research Center. Study characterization and drama techniques so that you may use the information you have found to create and present a first-person characterization of someone who once lived in the area.

Contact: Susan M. Bounds
 26800 Pemberton Drive
 Salisbury, MD 21801
 (410) 749-2614
susan.bounds@gmail.com

